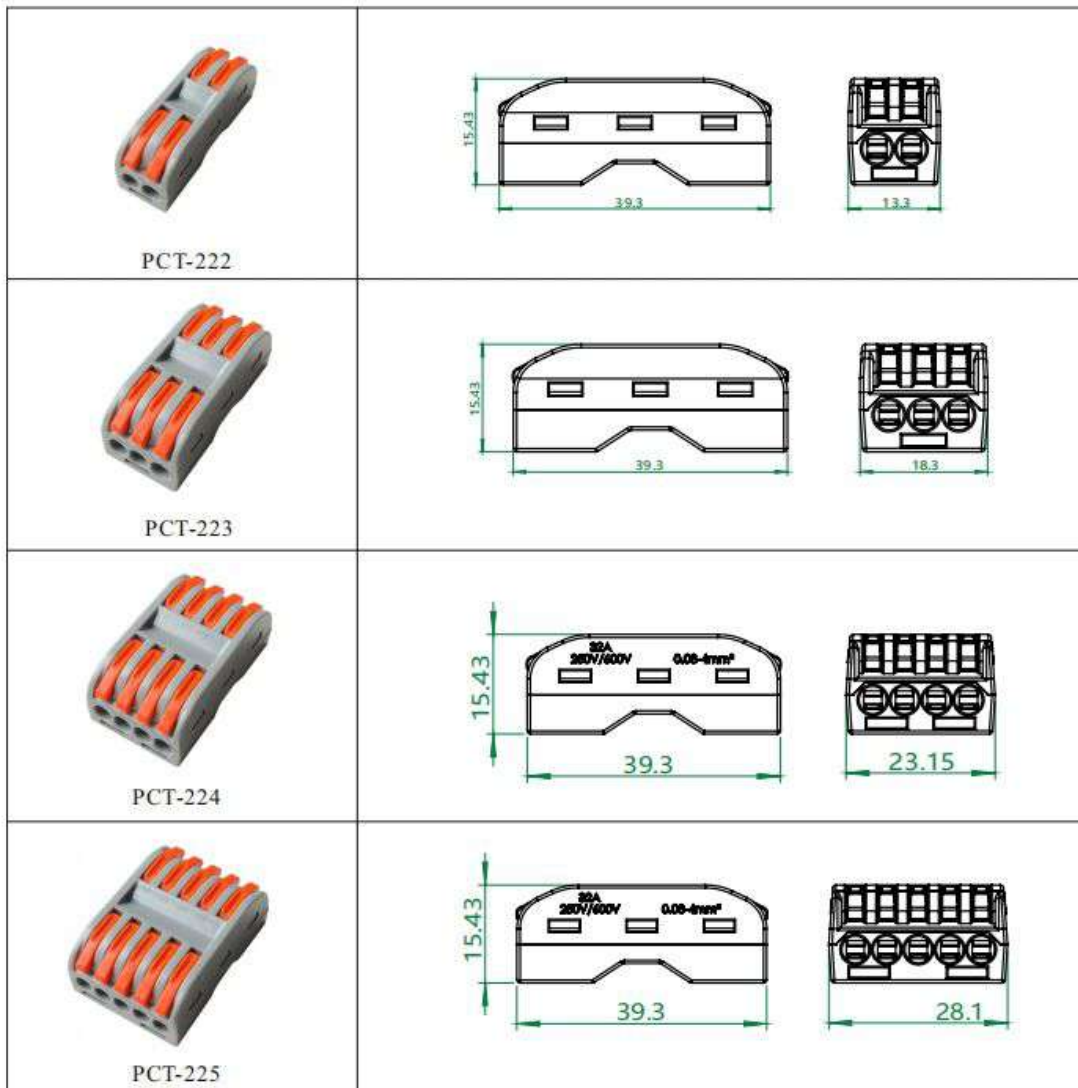
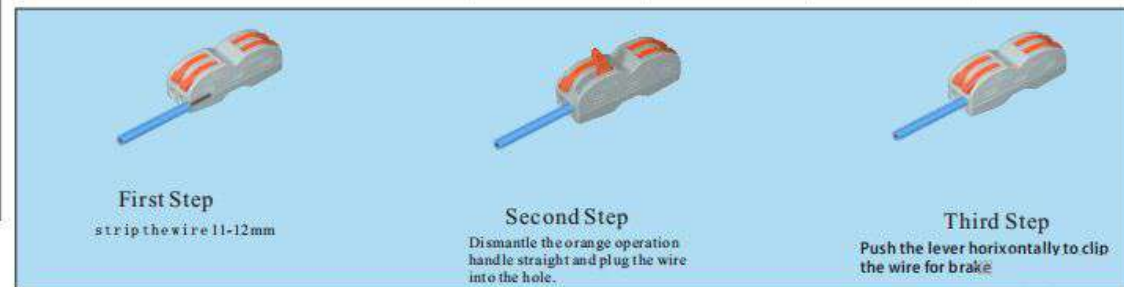


Technical parameter

Model	PCT-222	PCT-223	PCT-224	PCT-225
Appearance Specification				
Reference standard	IEC	IEC	IEC	IEC
Rated voltage	250V	250V	250V	250V
Rated current	32A	32A	32A	32A
Wire diameter	0.5-4mm ²	0.5-4mm ²	0.5-4mm ²	0.5-4mm ²
Voltage resistance	4kV	4kV	4kV	4kV
Mechanical properties				
Ambient temperature	-40°C~+105°C	-40°C~+105°C	-40°C~+105°C	-40°C~+105°C
Strip length	11-12mm	11-12mm	11-12mm	11-12mm
L/W/H	39.3×13×14.43	39.3×28.1×15.4	39.3×23.15×15.4	39.3×28.1×15.4
The number of poles	2P	3P	4P	5P
Lever colour				
Plastic parts	PC,UL94,V-2	PC,UL94,V-2	PC,UL94,V-2	PC,UL94,V-2
Shrapnel	S301	S301	S301	S301
Conductor material	T2	T2	T2	T2



0.4~2.5mm²

0.5~4mm²

250V/4kV/32A